

**movac**  
the solution provider

group  
limited

GYS  
Bodyshop  
**Tools**



**WELDING CURTAIN**

ref: 060470

• See page 7

**£199.00**  
EX VAT



**HYDRAULIC WHEEL SKATES (PAIR)**

ref: 053243

• See Page 9

**£199.00**  
EX VAT



**CAR BODY  
PARTS CART**

ref: 040243

• See Page 3

**£199.00**  
EX VAT

**MORE  
OFFERS  
INSIDE**



**PAINTLESS DENT REPAIR LAMP**

ref: 056749

• See Page 4

**£159.00**  
EX VAT

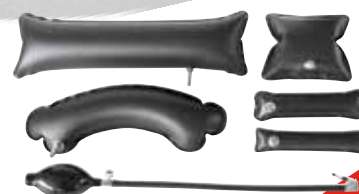


**SURFACE PREPARATION TOOL SYSTEM KIT**

ref: 051775

• See Page 5

**£279.00**  
EX VAT



**AIR CUSHION KIT**

ref: 051942

• See Page 4

**£64.10**  
EX VAT



GYS are the world leader in car body repair equipment with a wide range of Spot Welding, Riveting, Dent Pulling, Induction, Welding machines and more.

The GYS range has a wide range of VM approvals including Ford, Volkswagen Group, GM, Mercedes-Benz and more. Movac work directly with GYS in the UK and can arrange for demonstrations directly with the manufacturer, please ask for more details of how we can help you.



## PLASTIC STAPLER

ref: 052925

- Repair rather than replace
- Repair bumper splits
- Supplied with 100 mixed staples
- Supplied in hard plastic case



**£89.00**

SPECIAL PROMO PRICE EX VAT

~~£99.00~~  
List Price Ex VAT



## STAPLES KIT

ref: 052413

- Contains 250 staples

**£25.99**

EX VAT



## N STAPLES

ref: 047976

- 0.7mm Staples

**£8.90**

EX VAT



## M STAPLES

ref: 047952

- 0.7mm Staples

**£8.90**

EX VAT



## U STAPLES

ref: 047983

- 0.7mm Staples

**£8.90**

EX VAT



## W STAPLES

ref: 047969

- 0.7mm Staples

**£8.90**

EX VAT



## V STAPLES

ref: 047990

- 0.7mm Staples

**£8.90**

EX VAT



## PLASTIC WELDING / BRAZING KIT

ref: 052932

Complete kit:

- Hot Iron
- Plastic welding rods
- Brush
- Scissors
- Stainless steel mesh
- Carry Case

**£69.95**

SPECIAL PROMO PRICE EX VAT  
~~£79.95~~  
List Price Ex VAT



## STAINLESS STEEL MESH FOR PLASTIC WELDING

ref: 052949

- 25 X 12.5 cm
- Pack of 2

**£10.99**

EX VAT



## UNIVERSAL PLASTIC WELDING RODS

ref: 052956

- Black plastic rods
- Pack of 10

**£16.30**

EX VAT



## IRONING NOZZLE

ref: 052963

- For plastic welding kit

**£30.30**

EX VAT



## CAR BODY PARTS CART

ref: 040243

- Fantastic vehicle parts and trolley storage system
- Labelling facility and small parts rack
- Ideal for PAS 125 / Insurance requirements
- Include parts shelf, baskets, writing board and elastic straps
- On swivel castors
- Holds up to 200lbs
- 71 x 90 x 197cm

**SPECIAL  
PROMO  
PRICE**

**£199.00**  
EX VAT



## PANEL STAND

ref: 040250

- For doors, bumpers or bonnets

**£29.00**  
EX VAT



## PANEL TRESTLE/STAND

ref: 040601

- For doors, bumpers or bonnets
- With angled feet

**£25.00**  
EX VAT



## ROTATING PANEL STAND

ref: 052611

- High quality robust stand
- Full rotation
- For doors, wings and bonnets
- 6 panel clamps included
- Paint multiple panels

**£89.00**  
EX VAT



## BUMPER X STAND

ref: 052376

- Sturdy X Stand
- High quality product

**£47.00**  
EX VAT



## PREMIUM MASKING MATERIALS STAND

ref: 057333

- 3 tier stand
- Space for different masking rolls
- Masking tape can be applied to paper

**£179.00**  
EX VAT



## SUNMATCH COLOUR MATCH LED LAMP

ref: 055612

- Colour matching
- LED dual mode
- Charger included

**£99.00**

SPECIAL PROMO PRICE EX VAT  
~~£109.65~~  
List Price Ex VAT



## PAINTLESS DENT REPAIR KIT

ref: U56749

- Repair lamp
- 33 piece set: Includes Lever Hooks, 45-90 Flat Nose Bars, Flatbar, 45 Flatbar, Panel Bag, Window Wedge, Plastic Punch, Screw-on Plastic Rounded Tips, Door Jam, Curved Rounded Nose Hook Bar



**£399.00**  
A SAVING OF £98.00

## PAINTLESS DENT REPAIR KIT

ref: 051959

- 33 piece set
- (Includes Lever Hooks, 45-90 Flat Nose Bars, Flatbar, 45 Flatbar, Panel Bag, Window Wedge, Plastic Punch, Screw-on Plastic Rounded Tips, Door Jam, Curved Rounded Nose Hook Bar)



## PAINTLESS DENT REPAIR LAMP

ref: 056749

- 36 x 21 x 5 cm

**£159.00**  
EX VAT



**£338.00**  
EX VAT



## PENCIL PUNCHES KIT

ref: 052888

- With Teflon tips
- 6 Punches

**£42.00**  
EX VAT



## AIR CUSHION KIT

ref: 051942

- 6 pieces

**£64.10**  
EX VAT

## DENT PULLING CONSUMABLES



## STRAIGHT PULLING RINGS

ref: 050648

- Bag of 100

**£7.72**  
EX VAT



## WAVY WIRES

ref: 049727

- Bag of 50

**£8.82**  
EX VAT



## SPECIAL STARS

ref: 052239

- Nail pulling copper protection
- Pack of 20

**£5.15**  
EX VAT



## TWISTED PULLING RINGS

ref: 050631

- Bag of 50

**£16.17**  
EX VAT



## NAILS Ø2

ref: 041561

- Bag of 100 nails

**£3.34**  
EX VAT



### SURFACE PREPARATION TOOLS SYSTEM KIT

ref: 051775

- Complete surface preparation kit
- Left or right handed use
- Remove paint, stripes, under-seal and rust
- Remove paint without damaging panel
- Central dust extraction (when connected to system)
- Includes: Caramel stripe of wheel eraser
- Wire brush discs x 3 Fine, Medium, Coarse
- Surface conditioning stripping disc x 1

**£279.00**  
EX VAT



### MINI ANGLE GRINDER

ref: 051867

- 50mm
- Ideal for grinding in small areas
- Lightweight and powerful

**£63.00**  
EX VAT



### AIR BELT SANDER 330MM

ref: 052819

- Comes with 4 belts
- Length 26 cm
- Speed 16000 rpm
- Air pressure 6.3 bar

**£82.80**  
EX VAT



### POLYCARBONATE HEADLIGHT RENOVATION KIT

ref: 052086

Kit complete with:

- Two pistol grip polishers
- 2 x backing pads
- Black waffle soft polishing head
- Orange firm polishing waffle
- Includes abrasives and lens finishing compound
- Carry Case

**£243.00**  
EX VAT



## • FRAME STRAIGHTENING • FRAME STRAIGHTENING • FRAME STRAIGHTENING •



### SELF LOCKING PULLING CLAMP

ref: 052642

- Sprung wedge action
- 60mm wide jaws.
- 10 ton pulling capacity

**£99.00**  
EX VAT



### MINI PULLING CLAMP

ref: 056855

- 45mm wide jaws
- 5 tonne pull capacity
- Complete pull yoke

**£49.00**  
EX VAT

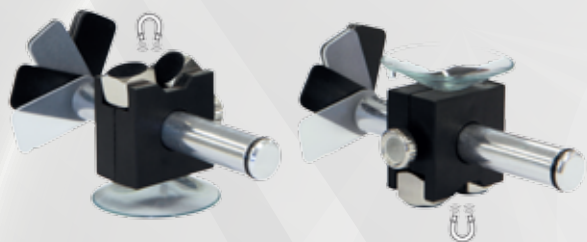


### RIGHT ANGLE PULLING CLAMP

ref: 0052666

- Straight and right angled pulls
- 6 ton pulling capacity
- 100mm jaw

**£119.00**  
EX VAT



## GAPPING GAUGES

ref: 054752

- Set of 2
- For use on panels and windscreens
- Suction pad and adjustable arms

**£35.00**  
Ex VAT



## POSITIONING CLAMP

ref: 043190

- Ensures a perfect welded butt joint
- Holds panels edge to edge with almost no gap - allowing full penetration of the weld
- Pack of 4
- 38mm x 68mm

**£26.10**  
EX VAT



## 4 NYLON CHISELS

ref: 054745

- Can be re-sharpened with a file
- Easily removes emblems and body moulding from painted surfaces without scratching the paint

**£13.99**  
EX VAT



## PROFILE GAUGE 500MM WITH LOCK

ref: 057265

**£50.80**  
EX VAT





## PROTECTIVE WELDING CURTAIN

ref: 060227

- OPTI 200.G/200.0
- Frame 2m x 2m
- Stable frame
- Filters visible and invisible light emitted by the welding arc
- 100% PVC, extinguishable and highly resistant
- Complies with ISO EN25980 :2015-01



**£99.00**

SPECIAL PROMO PRICE EX VAT

~~£117.00~~  
List Price Ex VAT



## MOBILE PROTECTIVE WELDING CURTAIN

ref: 060470

- OPTI 215.0
- Frame 200 x 215 cm
- Mobile with 4 wheels and brakes
- Filters visible and invisible light emitted by the welding arc
- 100% PVC, extinguishable and highly resistant
- Complies with ISO EN25980 :2015-01

**£234.00**

EX VAT



## HANGING PROTECTIVE WELDING CURTAIN

ref: 060487

- OPTI 140.0
- Flexible curtain
- Reinforced by seams over the entire perimeter
- Frame 160 x 140 cm
- Filters visible and invisible light emitted by the welding arc
- 100% PVC, extinguishable and highly resistant
- Complies with ISO EN25980 :2015-01

**£34.50**

EX VAT



**£49.95**

EX VAT

## GRINDING & SANDING PROTECTION COVER

ref: 050495

- 2m x 2m
- 550 degree protection



**£99.00**

EX VAT

## HIGH PERFORMANCE WELDING PROTECTION COVER

ref: 050204

- 1.75m x 1.5m
- 1200 degree protection



**£131.00**

EX VAT

## HIGH PERFORMANCE WELDING PROTECTION COVER

ref: 053595

- 2m x 1.8m
- 1300 degree protection



## HIGH PERFORMANCE WELDING PROTECTION COVER

ref: 060500

- 2m x 1.8m
- 1300 degree protection

**£117.00**

EX VAT



## POSITIONING MAGNETS

ref: 052291

- Set of 2

**£22.00**

EX VAT



## SPOT WELDING DRILL

ref: 050464

- Pneumatic
- 8mm bit size
- 800RPM to ensure drills last longer
- G frame for removing spot weld on edges
- Operating pressure 6.5 bar



**£289.00**

Ex VAT

## PLASMA CUTTER 31 FV

ref: 030985

- Single phase 13A
- 30A Output
- Cuts up to 10mm Steel & 8mm Aluminium/Copper
- Advanced arc starting
- PFC - efficient use on long extension leads
- Flexible voltage (110-230V)
- 12 Kg
- IP23



**£749.00**

EX VAT



## PORTASPOT

ref: 022256

- Single phase 230V
- Ideal for thin steel sheets 2mm + 2mm
- Continuous or pulse spot welding
- Clamping force 30daN - 120daN
- Thermal protection
- Delivered with PX1 arms as shown
- 10 Kg

**£749.00**

EX VAT

## MIG WELDING CONSUMABLES

Product	Ref	Wire Reel Size	PRICE EX VAT
00.6mm MIG Wire (Steel)	086111	5 Kg	<b>£17.50</b>
00.8mm MIG Wire (Steel)	086128	5 Kg	<b>£13.50</b>
00.6mm MIG Wire (Steel)	086166	15 Kg	<b>£45.00</b>
00.8mm MIG Wire (Steel)	086227	15 Kg	<b>£35.00</b>
00.8mm MIG Wire (Aluminium AISi5)	086685	0.5 Kg	<b>£15.30</b>
00.8mm MIG Wire (Cusi3) Brazing	086647	5 Kg	<b>£130.00</b>



## TECHNO 11 WELDING HELMET

ref: 042537

- Automatic helmet
- Shade 11
- UV/IR DIN 15 protection

**£29.00**

EX VAT



## ZEUS FIRE WELDING HELMET

ref: 044098

- Automatic helmet
- XL LED screen (100 x 67mm)
- 4 sensors TIG welding > 2 Amp
- Adjustable sensitivity & delay
- Shade 5-9/9-13 & grind lock

**£64.80**

EX VAT





## PAIR OF HYDRAULIC WHEEL SKATES

ref: 053243

- 1500lbs per unit carrying capacity
- Lift vehicle in seconds

**£199.00**

SPECIAL PROMO PRICE EX VAT

~~£249.00~~

List Price Ex VAT



## PAIR OF WHEEL TROLLEYS

• ref: 048768

- Raise the height of the vehicle
- Vehicle can be moved 360 degrees
- Gain access to lower areas of the vehicle

**£179.00**

SPECIAL PROMO PRICE EX VAT

~~£199.00~~

List Price Ex VAT



## AIR JACK CAR 2T

ref: 058323

- Pneumatically controlled jacks
- Silent, simple and lightweight
- Highly resistant diaphragm and internal telescopic guide
- Fitted with a limit stop device as well as a safety valve
- Absolutely reliable in case of excessive loads
- Ideal for tyre repairers and bodyshops
- Minimum height 13.2 cm
- Maximum height 32.6 cm
- 14 Kg

**£449.00**

EX VAT

# THE 1-2-3 TEST

Whether it's for Charging or Starting- GYS believe that the ideal tools must meet 3 simple criteria, encompassed with the GYS 1-2-3 Test.

- 1. Safety** - The product must be safe to use with the battery in situ, chargers must include protection to ensure that no damage can be done to the vehicle's electronic system. This can include overvoltage protection, polarity reversal and the prevention of sparks.
- 2. All Battery Types** - Equipment must have the ability to charge or work with the latest battery types. We now see new battery materials - AGM, EFB, Stop Start, Silver/ Calcium - a traditional constant current charger cannot be recommended for the latest battery types.
- 3. Universal Mode** - The ability to safely charge when the battery type is not known, this is a very important 'real world' problem. Technicians will have experienced the difficulty in locating and identifying the battery type in many vehicles. GYS products offer a solution simply to connect and go, giving the assurance that the charge will be conducted safely without requiring the technician to identify the battery type.

## 1 Safety

- ✓ Provides protection for the vehicles' electronics
- ✓ Safe to charge in situ - no need to disconnect from the battery
- ✓ Polarity reversal protection
- ✓ Incorrect voltage protection.

## 2 All Battery Types

- ✓ Smart: advanced charging curves to suit the battery type e.g AGM, EFB, Stop Start, Silver/Calcium.



## 3 Universal Mode

- ✓ A function allowing the user to charge the battery safely when the type is not known.



### ADVANCED BATTERY CHARGER

#### BATIUM 7/12

ref: 024557

- Designed for the professional automotive bodyshop
- Suitable for all modern battery types
- Full protection for vehicle electronics
- 6V/12V
- Charge range 15-130Ah

**£99.00**

EX VAT

**THE GYS 1-2-3 TEST**

Product	Ref	Voltage	Charge Range	Protection	SOS Recovery	All Battery Types	Universal Mode	Use in Situ	External Fuse	Price EX VAT
Batium 7/12	024557	6V/12V	15-130Ah	✓	-	✓	✓	✓	✓	£99.00
Batium 7/24	024625	6V/12V/24V	15-130Ah	✓	-	✓	✓	✓	✓	£119.00
Batium 15/12	024632	6V/12V	35-225Ah	✓	✓	✓	✓	✓	✓	£129.00
Batium 15/24	024588	6V/12V/24V	35-225Ah	✓	✓	✓	✓	✓	✓	£169.00

### 500AMP HEAVY DUTY JUMP LEADS

ref: 564015

- With brass clamps
- 500A
- 35mm<sup>2</sup> cable
- 2 x 4.5m

**£44.30**

EX VAT

### 700AMP HEAVY DUTY JUMP LEADS

ref: 056404

- With brass clamps
- 700A
- 35mm<sup>2</sup> cable
- 2 x 4.5m

**£82.70**

EX VAT

### ANTI-ARC PROTECTION 12V

ref: 041318

- Enables user to weld on a vehicle without disconnecting the battery
- Protects against voltage peaks

**£15.10**

EX VAT

### • VEHICLE MEMORY SAVER •

#### GYSPACK OBD

ref: 055001

- Vehicle memory saver
- 12V/7Ah internal battery
- OBD battery connection 4A max
- Cigarette lighter connection 4A max
- 3 Kg

**£79.00**

EX VAT



## HIGH TECH STARTER/CHARGER

### STARTIUM 680E ref: 025585

- 1** SAFE - no need to remove the battery, voltage protection for vehicle electronics
  - 2** ALL BATTERY TYPES - safe to charge any battery including AGM Stop/Start
  - 3** UNIVERSAL MODE - safe charging without the need to identify the battery type
- Protection for vehicle electronics
  - SOS recovery (sulphated battery recovery)
  - Auto Start - current will be activated when the ignition is switched on
  - Charges deeply discharged batteries as low as 1V
  - Timer
  - Alternator test function
  - For 12V/24V vehicles



**£549.00**

Ex VAT



### STARTIUM 480E

ref: 026483

- 1** SAFE - no need to remove the battery, voltage protection for vehicle electronics
  - 2** ALL BATTERY TYPES - safe to charge any battery including AGM Stop/Start
  - 3** UNIVERSAL MODE - safe charging without the need to identify the battery type
- Protection for vehicle electronics
  - SOS recovery (sulphated battery recovery)
  - Auto Start - current will be activated when the ignition is switched on
  - Charges deeply discharged batteries as low as 1V
  - Timer
  - Alternator test function
  - For 12V/24V vehicles



**£479.00**

EX VAT

## • BOOSTER PACKS • BOOSTER PACKS • BOOSTER PACKS • BOOSTER PACKS •



### GYSPACK 750

ref: 026353

- Professional high power booster pack
- 2500A Peak current
- 1450A Cranking current
- 750A Starting current
- 14 Kg

**£309.00**

EX VAT



### GYSPACK 810

ref: 026278

- Heavy duty booster pack
- 3100A Peak current
- 1700A Cranking current
- 830A Starting current
- 16.6 Kg

**£499.00**

EX VAT



### STARTPACK PRO 12.24

ref: 026346

- Heavy duty professional booster pack
- 12V/24V batteries
- 8500A/4250A Peak current
- 3000A/2600A Cranking current
- 1600A/1400A Starting current
- 45.5 Kg
- Wheels for easy mobility

**£1029.00**

EX VAT







## Movac Group Limited

**Head Office:** 11 Portman Road, Ipswich, Suffolk UK IP1 2BP

**T** 0844 561 0070 **F** 0844 561 0080 **E** [info@movac.com](mailto:info@movac.com) [www.movac.com](http://www.movac.com)

### Cambridge:

T 01763 268487

F 01763 262369

E [cambridge.depot@movac.com](mailto:cambridge.depot@movac.com)

### Norwich:

T 01603 787474

F 01603 787434

E [norwich.depot@movac.com](mailto:norwich.depot@movac.com)

### Reading:

T 0118 977 1198

F 0118 989 3516

E [reading.depot@movac.com](mailto:reading.depot@movac.com)

### Coventry:

T 02476 456454

F 02476 636946

E [coventry.depot@movac.com](mailto:coventry.depot@movac.com)

### Nottingham:

T 0115 977 0108

F 0115 976 4534

E [nottingham.depot@movac.com](mailto:nottingham.depot@movac.com)

### Romford:

T 01708 374227

F 01708 386877

E [romford.depot@movac.com](mailto:romford.depot@movac.com)

### Ipswich:

T 01473 343999

F 01473 286225

E [ipswich.depot@movac.com](mailto:ipswich.depot@movac.com)

### Peterborough:

T 01733 558906

F 01733 358611

E [peterborough.depot@movac.com](mailto:peterborough.depot@movac.com)

### vernici:

T 01603 894019

F 01603 787434

E [sales@vernici.co.uk](mailto:sales@vernici.co.uk)